

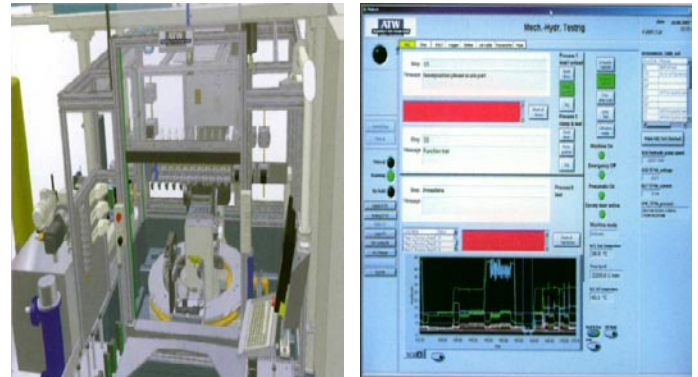
Mechatronic Valve Body EOL Function Test

With the launch of a new generation of car transmission systems the automotive industry requires state of the art test technology for the implemented hydraulic mechatronic unit before it is attached to the gearbox. One of the big challenges is to simulate the installed conditions (e. g. bolt forces, oil conditioning) and to teach in the control characteristics. ATW was one of the first suppliers that could offer a hydraulic test rig with the functionality, precision and the level of automation that is necessary for a 100% test at end of line. In the meantime a lot of ATW rigs in the field assure the high product quality needed to be up to the sophisticated standards of the automotive industry.



System Overview

- ATW Standard Software for Test Automation and Data Acquisition
- 2 Station index table (load/unload – test position)
- preloaded changeable multiport adaptation
- modular transducer- and valve-bank
- hydraulic unit to conditions the transmission fluid
- controllable test pressure up to 60 bar
- controllable flow up to 120 l/min (37.7 gal/min)
- 19 test circuits (flow/pressure/temperature/voltage)
- PC-controlled data acquisition and analyzing
- graphical user interface
- product identification and traceability record
- oil exhausting unit



System Values & Benefits

- testing over oil
- test procedures parallel to load and unload
- modular test circuit installation
- variable product adaptation
- excellent accessibility of the test area and the test circuit
- prepared for automatic load / unload

System Highlights

- ATW Standard Software for Test Automation and Data Acquisition
- metallic sealing without additional gasket
- realistic test conditions due to implementation of original pump and clutch
- Adjustable 220 kN bolt simulation force
- Controllable oil temperature, pressure and defined cleanness