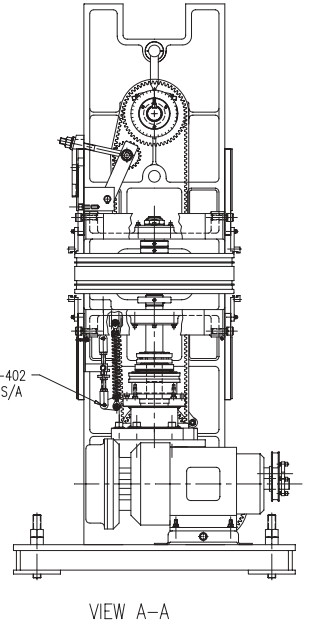
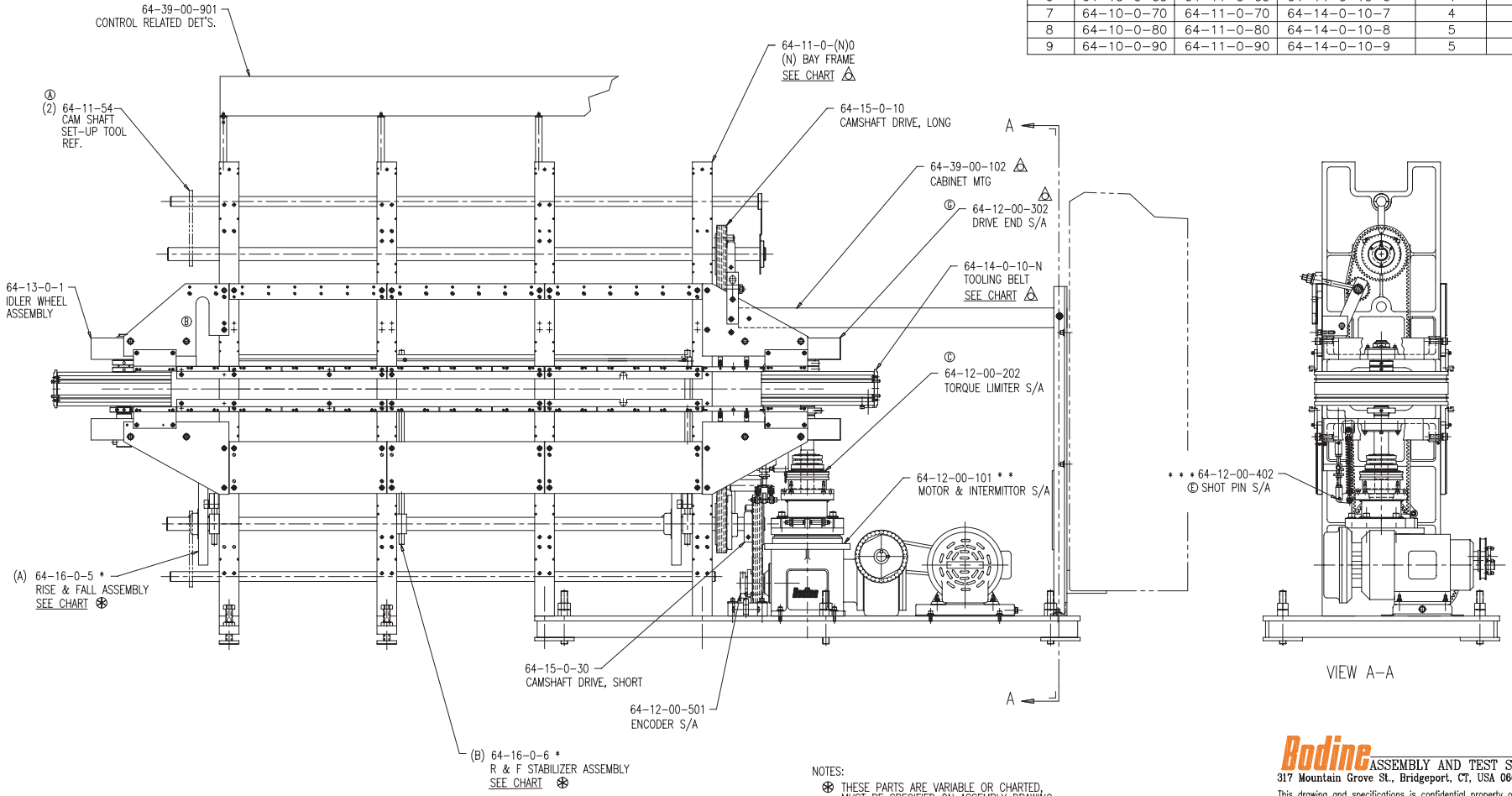


ALTERATION	DATE	BY

MACHINE BAYS	ASS'Y DRAWING NUMBER	FRAME S/A DWG. NUMBER	TOOLING BELT S/A DWG. NUMBER	A	B
1	64-10-0-10	64-11-0-10	64-14-0-10-1	2	0
2	64-10-0-20	64-11-0-20	64-14-0-10-2	2	0
3	64-10-0-30	64-11-0-30	64-14-0-10-3	2	1
4	64-10-0-40	64-11-0-40	64-14-0-10-4	3	0
5	65-10-0-50	64-11-0-50	64-14-0-10-5	3	1
6	64-10-0-60	64-11-0-60	64-14-0-10-6	4	0
7	64-10-0-70	64-11-0-70	64-14-0-10-7	4	1
8	64-10-0-80	64-11-0-80	64-14-0-10-8	5	0
9	64-10-0-90	64-11-0-90	64-14-0-10-9	5	1



- NOTES:
- ⊗ THESE PARTS ARE VARIABLE OR CHARTED, MUST BE SPECIFIED ON ASSEMBLY DRAWING AND BILL OF MATERIAL.
 - ⚠ THESE PARTS ARE STANDARD, SPECIFY IF OTHERWISE.
 - * THE POSITIONS OF THE RISE AND FALL ASSEMBLIES: 64-16-0-5 AND 64-16-0-6, MUST BE SPECIFIED ON THE CUSTOMER MACHINE LAYOUT
 - ** SELECT & SPECIFY BELT AND SHEAVES BASED ON INTERMITTOR USED AND MACHINE SPEED.
 - *** SELECT & SPECIFY SHOT PIN CAM BASED ON MACHINE INDEX AND ROTATION.

Bodine ASSEMBLY AND TEST SYSTEMS
 317 Mountain Grove St., Bridgeport, CT, USA 06605-2133

This drawing and specifications is confidential property of the Bodine Corporation and shall not be reproduced, copied, disclosed to others or used as the basis for the manufacture or sales of components or devices or for any other reason without written permission.

General Tolerances		4 Place Decimal ±.0005
Unless Otherwise Specified, Break	3 Place Decimal ±.002	
All Sharp Edges .005/.010 x 45°	2 Place Decimal ±.010	
	Angular Dimensions ±1°	

Inch		(N) BAY LINEAR ASSEMBLY MACHINE - CLOCKWISE	
Filename: 64-10-0-00-02.DWG	Scale: 1:8	Drawn By: PA	Checked By: Sht 1 of 1
Date: 3/29/96	Scale: 1:8	Drawn By: PA	Checked By: Sht 1 of 1
DO NOT SCALE DRAWING		Des. No. 64-10-0-(N)0	

METRIC EQUIVALENT: 65-10-0-(N)0